

Cleveland Punch & Die Co.

PUNCHES • DIES • SHEAR BLADES
for KINGSLAND™ IRONWORKERS



phone 1-800-451-4342
fax 1-800-451-6877

666 Pratt St. • Box 769 • Ravenna, Ohio 44266 • www.clevelandpunch.com

CLEVELAND PUNCH & DIE COMPANY

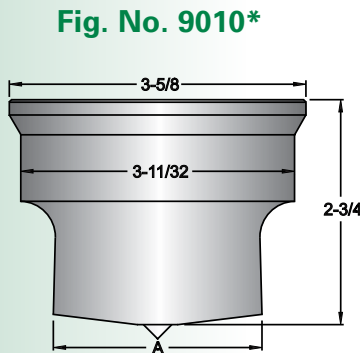
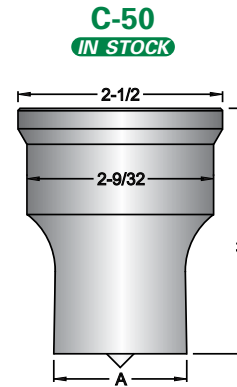
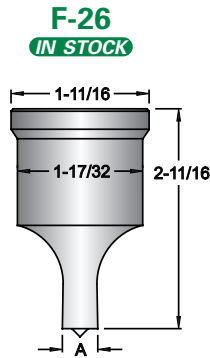
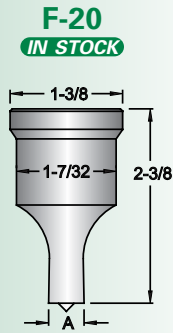
Dimensions & Specifications

This page illustrates our commonly used punches and dies for Kingsland™ Ironworkers. Refer to our **Cross Reference Catalog** for the proper tooling to fit your machine.

STOCK PUNCHES & DIES ARE SHIPPED THE SAME DAY ORDERED!

**MADE TO ORDER SIZES CAN BE SHIPPED IN AS LITTLE AS 24 HOURS!*

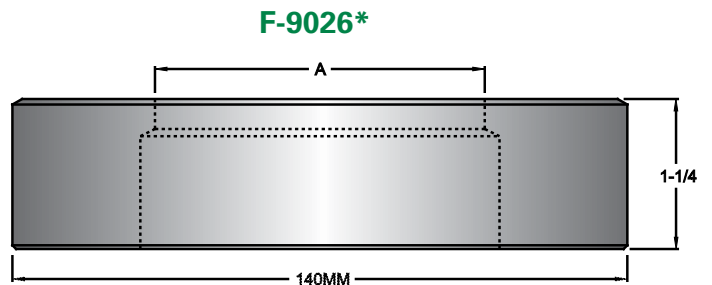
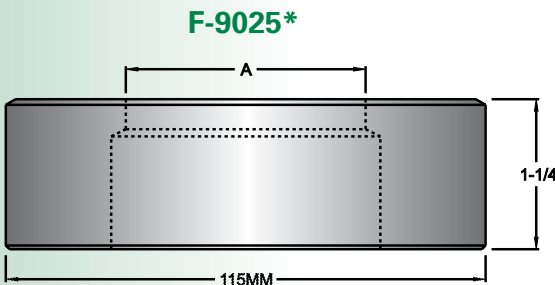
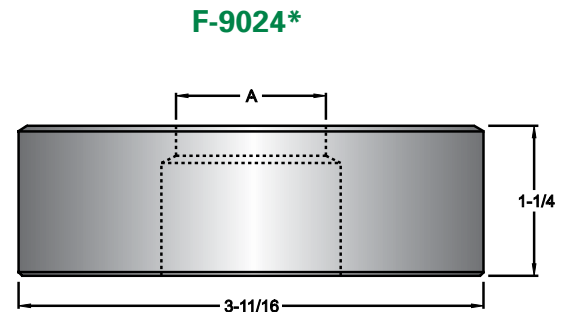
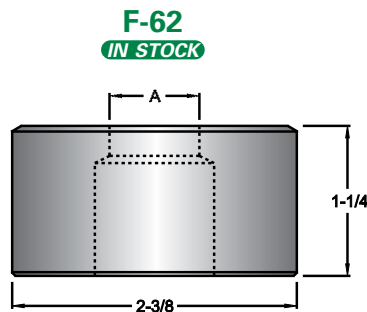
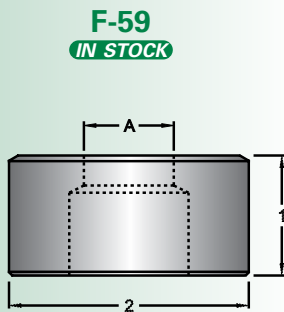
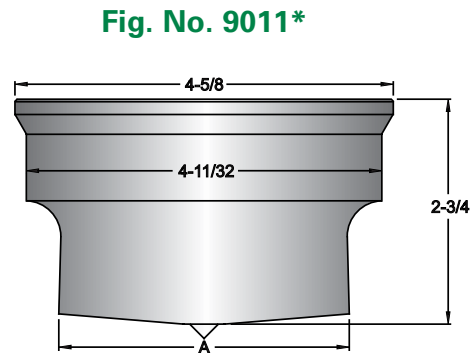
KINGSLAND™ TOOLING



OSHA WARNING

It is the user's responsibility that the machine and **tooling** be set up and used in accordance with local and national OSHA Laws and ANSI B11.5 standards for safety.

Do not permit unqualified personnel to setup or operate the machine. Extreme care should be used at all times.



FOR A-36 AND MILD STEEL PLATE:

1/4" up to 1/2"	1/32" clearance
1/2" up to 3/4"	1/16" clearance
3/4" up to 1"	3/32" clearance
1" and over	1/8" clearance

PLEASE NOTE: We stock 1/32" & 1/16" clearance die sizes. Other made to order die sizes such as clearances recommended for gauge stock, can be shipped in as little as 24 hours.

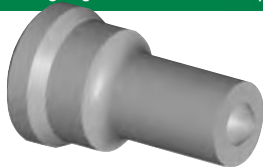
FOR MORE HOLES PER DOLLAR CALL
1-800-451-4342
 FAX 1-800-451-6877
www.clevelandpunch.com

GREEN TEAM TIP:

Good results are obtained by using the following chart to determine die clearance.

MADE TO ORDER SIZES CAN BE SHIPPED IN AS LITTLE AS 24 HOURS!

STOCK ROUND PUNCHES FIGURE NUMBER



Size	20	26	Size	C-50
1/8	●		1-1/16	●
5/32	●	●	1-1/8	●
3/16	●	●	1-3/16	●
7/32	●	●	1-1/4	●
1/4	●	●	1-5/16	●
9/32	●	●	1-3/8	●
5/16	●	●	1-7/16	●
11/32	●	●	1-1/2	●
3/8	●	●	1-9/16	●
13/32	●	●	1-5/8	●
7/16	●	●	1-11/16	●
15/32	●	●	1-3/4	●
1/2	●	●	1-13/16	●
17/32	●	●	1-7/8	●
9/16	●	●	1-15/16	●
19/32	●	●	2	●
5/8	●	●	2-1/16	●
21/32	●	●	2-1/8	●
11/16	●	●	2-3/16	●
23/32	●	●	2-1/4	●
3/4	●	●		
25/32	●	●		
13/16	●	●		
27/32	●	●		
7/8	●	●		
29/32	●	●		
15/16	●	●		
31/32	●	●		
1	●	●		
1-1/32	●	●		
1-1/16	●	●		
1-3/32	●	●		
1-1/8	●	●		
1-5/32	●	●		
1-3/16	●	●		
1-7/32	●	●		
1-1/4	●	●		
1-9/32	●	●		
1-5/16	●	●		
1-11/32	●	●		
1-3/8	●	●		
1-13/32	●	●		
1-7/16	●	●		
1-15/32	●	●		
1-1/2	●	●		
1-17/32	●	●		
1-9/16	●	●		

● Represents stock round sizes

STOCK ROUND DIES FIGURE NUMBER



Size	59	62
5/32	●	
3/16	●	●
7/32	●	●
1/4	●	●
9/32	●	●
5/16	●	●
11/32	●	●
3/8	●	●
13/32	●	●
7/16	●	●
15/32	●	●
1/2	●	●
17/32	●	●
9/16	●	●
19/32	●	●
5/8	●	●
21/32	●	●
11/16	●	●
23/32	●	●
3/4	●	●
25/32	●	●
13/16	●	●
27/32	●	●
7/8	●	●
29/32	●	●
15/16	●	●
31/32	●	●
1	●	●
1-1/32	●	●
1-1/16	●	●
1-3/32	●	●
1-1/8	●	●
1-5/32	●	●
1-3/16	●	●
1-7/32	●	●
1-1/4	●	●
1-9/32	●	●
1-5/16	●	●
1-11/32	●	●
1-3/8	●	●
1-13/32	●	●
1-7/16	●	●
1-15/32	●	●
1-1/2	●	●
1-17/32	●	●
1-9/16	●	●
1-19/32	●	●
1-5/8	●	●

The following tables list our stock round punches and dies for Kingsland™ Ironworkers. Refer to our **Cross Reference Catalog** for the proper tooling to fit your machine.

Returns

Returned tooling will not be accepted without prior authorization. No credit issued on used or damaged tooling. Special tooling can not be returned. Returned tooling must be shipped prepaid. Restocking charge is 25% of list price.

Shortages

All claims must be made within ten days of invoice date.

Terms

F.O.B. Ravenna, Ohio
Net 30 days

Changes

All reference to sizes, dimensions, drawings, specifications, whether on drawings, written or otherwise are subject to change without notice.

ROUND KINGSLAND™ TOOLING

CLEVELAND PUNCH & DIE COMPANY

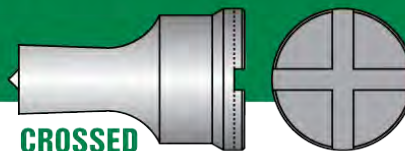
The following tables list our stock oblong punches and dies for Kingsland™ Ironworkers. Refer to our **Cross Reference Catalog** for the proper tooling to fit your machine.

STOCK PUNCHES & DIES ARE SHIPPED THE SAME DAY ORDERED!
MADE TO ORDER SIZES
CAN BE SHIPPED IN AS
LITTLE AS 24 HOURS!



Keyways in Head of Punch

Oblong punches are stocked without keyways in the head. Keyways can be furnished on request.



● Represents stock oblong sizes

OBLONG KINGSLAND™ PUNCHES

Size	FIGURE NUMBER	
	20	26
3/16 x 3/4		
3/16 x 1	●	●
7/32 x 7/16	●	
7/32 x 1	●	●
1/4 x 1/2	●	●
1/4 x 3/4	●	●
1/4 x 1	●	●
9/32 x 9/16	●	●
9/32 x 3/4	●	●
9/32 x 1	●	●
5/16 x 1/2	●	●
5/16 x 5/8	●	●
5/16 x 3/4	●	●
5/16 x 1	●	●
5/16 x 1-1/16	●	●
5/16 x 1-1/4	●	●
5/16 x 1-1/2	●	●
11/32 x 11/16	●	●
11/32 x 1	●	●
3/8 x 1/2	●	●
3/8 x 3/4	●	●
3/8 x 1	●	●
3/8 x 1-1/4	●	●
3/8 x 1-1/2	●	●
13/32 x 13/16	●	●
13/32 x 1	●	●
13/32 x 1-1/4	●	●

Size	FIGURE NUMBER	
	20	26
7/16 x 9/16	●	●
7/16 x 3/4	●	●
7/16 x 7/8	●	●
7/16 x 1	●	●
7/16 x 1-1/16	●	●
7/16 x 1-1/4	●	●
7/16 x 1-1/2	●	●
15/32 x 1	●	●
1/2 x 3/4	●	●
1/2 x 1	●	●
1/2 x 1-1/16	●	●
1/2 x 1-1/4	●	●
1/2 x 1-1/2	●	●
17/32 x 1	●	●
17/32 x 1-1/4	●	●
17/32 x 1-1/2	●	●
9/16 x 3/4	●	●
9/16 x 1	●	●
9/16 x 1-1/16	●	●
9/16 x 1-1/8	●	●
9/16 x 1-1/4	●	●
9/16 x 1-1/2	●	●
5/8 x 1	●	●
5/8 x 1-1/4	●	●
5/8 x 1-1/2	●	●
11/16 x 1	●	●
11/16 x 1-1/16	●	●

Size	FIGURE NUMBER	
	20	26
11/16 x 1-1/8	●	●
11/16 x 1-1/4	●	●
11/16 x 1-1/2	●	●
3/4 x 1	●	●
3/4 x 1-1/4	●	●
3/4 x 1-1/2	●	●
13/16 x 1	●	●
13/16 x 1-1/16	●	●
13/16 x 1-1/8	●	●
13/16 x 1-1/4	●	●
13/16 x 1-1/2	●	●
7/8 x 1-1/4	●	●
7/8 x 1-1/2	●	●
15/16 x 1-1/16	●	●
15/16 x 1-1/8	●	●
15/16 x 1-1/4	●	●
15/16 x 1-1/2	●	●
15/16 x 1-9/16	●	●
1 x 1-1/4	●	●
1 x 1-1/2	●	●
1 x 1-9/16	●	●
1-1/16 x 1-1/4	●	●
1-1/16 x 1-5/16	●	●
1-1/16 x 1-1/2	●	●
1-1/16 x 1-9/16	●	●
1-1/8 x 1-1/2	●	●

GREEN TEAM TIP:

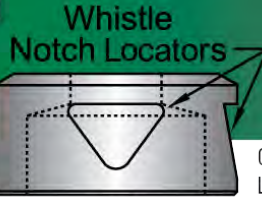
Punches last longer when used with a punch lubricant. For maximum punch life, use Cleveland Punch & Die's patented punch lubricant - **Punch Easy.**



FOR MORE HOLES PER DOLLAR CALL
1•800•451•4342
 FAX 1•800•451•6877
 www.clevelandpunch.com



● Represents stock oblong sizes



MADE TO ORDER SIZES CAN BE SHIPPED IN AS LITTLE AS 24 HOURS!

Oblong dies are stocked without locators.
 Locators can be furnished on request.

FIGURE NUMBER			FIGURE NUMBER			FIGURE NUMBER			FIGURE NUMBER		
Size	59	62	Size	59	62	Size	59	62	Size	59	62
7/32 x 1-1/32	●	●	15/32 x 25/32	●	●	5/8 x 1-3/16	●	●	7/8 x 1-3/16	●	●
15/64 x 29/64	●		15/32 x 29/32	●	●	5/8 x 1-5/16	●	●	7/8 x 1-5/16	●	●
1/4 x 15/32	●		15/32 x 1-1/32	●	●	5/8 x 1-9/16		●	7/8 x 1-9/16		●
1/4 x 1-1/32	●	●	15/32 x 1-3/32	●	●	21/32 x 1-1/32	●	●	29/32 x 1-9/32	●	●
9/32 x 17/32	●	●	15/32 x 1-9/32	●	●	21/32 x 1-9/32	●	●	29/32 x 1-17/32		●
9/32 x 25/32	●	●	15/32 x 1-17/32		●	21/32 x 1-17/32		●	15/16 x 1-5/16	●	●
9/32 x 1-1/32	●	●	1/2 x 1-1/32	●	●	11/16 x 1-1/16	●	●	15/16 x 1-9/16	●	●
5/16 x 19/32	●	●	1/2 x 1-1/16	●	●	11/16 x 1-5/16	●	●	31/32 x 1-3/32	●	●
5/16 x 25/32	●	●	1/2 x 1-5/16	●	●	11/16 x 1-9/16		●	31/32 x 1-5/32	●	●
5/16 x 1-1/32	●	●	17/32 x 25/32	●	●	23/32 x 1-1/32	●	●	31/32 x 1-9/32	●	●
11/32 x 17/32	●	●	17/32 x 1-1/32	●	●	23/32 x 1-3/32	●	●	31/32 x 1-17/32		●
11/32 x 21/32	●	●	17/32 x 1-3/32	●	●	23/32 x 1-5/32	●	●	1 x 1-1/8	●	●
11/32 x 25/32	●	●	17/32 x 1-9/32	●	●	23/32 x 1-9/32	●	●	1 x 1-3/16	●	●
11/32 x 1-1/32	●	●	17/32 x 1-17/32		●	23/32 x 1-17/32		●	1 x 1-5/16	●	●
11/32 x 1-3/32	●	●	9/16 x 13/16	●	●	3/4 x 1-1/16	●	●	1 x 1-9/16	●	●
11/32 x 1-9/32	●	●	9/16 x 1-1/32	●	●	3/4 x 1-1/8	●	●	1 x 1-5/8		●
11/32 x 1-17/32		●	9/16 x 1-1/16	●	●	3/4 x 1-3/16	●	●	1-1/32 x 1-9/32	●	●
3/8 x 23/32	●	●	9/16 x 1-1/8	●	●	3/4 x 1-5/16	●	●	1-1/32 x 1-17/32		●
3/8 x 1-1/32	●	●	9/16 x 1-3/16	●	●	3/4 x 1-9/16		●	1-1/32 x 1-19/32		●
3/8 x 1-5/16	●	●	9/16 x 1-9/32	●	●	25/32 x 1-1/32	●	●	1-1/16 x 1-5/16	●	●
13/32 x 17/32	●	●	9/16 x 1-5/16	●	●	25/32 x 1-9/32	●	●	1-1/16 x 1-9/16		●
13/32 x 25/32	●	●	9/16 x 1-17/32		●	25/32 x 1-17/32		●	1-1/16 x 1-5/8		●
13/32 x 1-1/32	●	●	9/16 x 1-9/16		●	13/16 x 1-1/16	●	●	1-3/32 x 1-9/32	●	●
13/32 x 1-9/32	●	●	19/32 x 25/32	●	●	13/16 x 1-5/16	●	●	1-3/32 x 1-11/32		●
13/32 x 1-17/32		●	19/32 x 1-1/32	●	●	13/16 x 1-9/16		●	1-3/32 x 1-17/32		●
7/16 x 27/32	●	●	19/32 x 1-3/32	●	●	27/32 x 1-1/32	●	●	1-1/8 x 1-5/16	●	●
7/16 x 1-1/32	●	●	19/32 x 1-5/32	●	●	27/32 x 1-3/32	●	●	1-1/8 x 1-3/8		●
7/16 x 1-9/32	●	●	19/32 x 1-9/32	●	●	27/32 x 1-5/32	●	●	1-1/8 x 1-9/16		●
7/16 x 1-5/16		●	19/32 x 1-17/32		●	27/32 x 1-9/32	●	●	1-1/8 x 1-5/8		●
15/32 x 19/32	●	●	5/8 x 13/16	●	●	27/32 x 1-17/32		●	1-5/32 x 1-17/32		●
			5/8 x 1-1/16	●	●	7/8 x 1-1/16	●	●	1-3/16 x 1-9/16		●
			5/8 x 1-1/8	●	●	7/8 x 1-1/8	●	●			

GREEN TEAM TIP:
 Periodically check the inside seat
 of your die holder for metal chips
 & excessive wear.

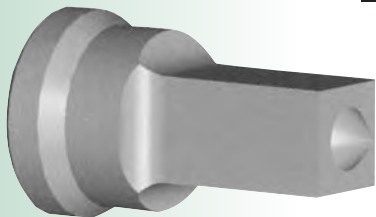
OBLONG KINGSLAND™ DIES

CLEVELAND PUNCH & DIE COMPANY

The following tables list our stock square punches and dies. Refer to our **Cross Reference Catalog** for the proper tooling to fit your machine.

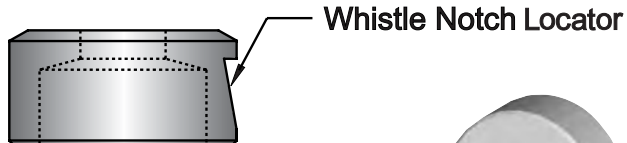
STOCK PUNCHES & DIES ARE SHIPPED THE SAME DAY ORDERED!
MADE TO ORDER SIZES CAN BE SHIPPED IN AS LITTLE AS 24 HOURS!

■ Represents stock square sizes



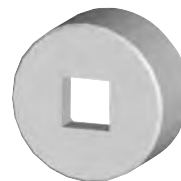
Keyways in Head of Punch

Square punches are stocked without keyways in the head. Keyways can be furnished on request.



Whistle Notch Locator

Square dies are stocked without locators. Locators can be furnished on request.

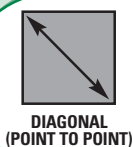


STOCK SQUARE PUNCHES

	FIGURE NUMBER	
Size	20	26
7/32	■	
1/4	■	
9/32	■	
5/16	■	■
11/32	■	■
3/8	■	■
13/32	■	■
7/16	■	■
15/32	■	■
1/2	■	■
17/32	■	■
9/16	■	■
19/32	■	■
5/8	■	■
21/32	■	■
11/16	■	■
23/32	■	■
3/4	■	■
25/32	■	■
13/16	■	■
7/8	■	■
15/16		■
1		■
1-1/32		■
1-1/16		■

STOCK SQUARE DIES

	FIGURE NUMBER	
Size	59	62
1/4	■	
9/32	■	
5/16	■	
11/32	■	■
3/8	■	■
13/32	■	■
7/16	■	■
15/32	■	■
1/2	■	■
17/32	■	■
9/16	■	■
19/32	■	■
5/8	■	■
21/32	■	■
11/16	■	■
23/32	■	■
3/4	■	■
25/32	■	■
13/16	■	■
27/32	■	■
7/8	■	■
29/32	■	■
15/16	■	■
31/32		■
1	■	■
1-1/32		■
1-1/16	■	■
1-3/32		■
1-1/8	■	■



GREEN TEAM TIP:

You must check the diagonal of your square sizes to ensure that the punches will pass through the bore of your coupling nut without interference. The diagonal of a square can be determined by multiplying the size of the square by 1.414.

This catalog is the property of The Cleveland Punch & Die Company. All rights reserved. Reproduction of any part of this catalog without the **expressed written consent** of The Cleveland Punch & Die Company is strictly prohibited. **COPYRIGHT©2001**

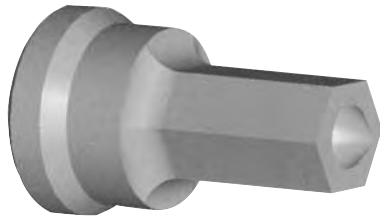
Dimensions & Specifications

The following tables list our stock hexagon punches and dies for Kingsland™ Ironworkers. Refer to our **Cross Reference Catalog** for the proper tooling to fit your machine.

FOR MORE HOLES PER DOLLAR CALL
1-800-451-4342
 FAX 1-800-451-6877
www.clevelandpunch.com

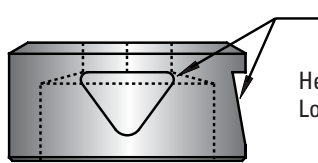
STOCK PUNCHES & DIES ARE SHIPPED THE SAME DAY ORDERED!

MADE TO ORDER SIZES CAN BE SHIPPED IN AS LITTLE AS 24 HOURS!



Keyways in Head of Punch

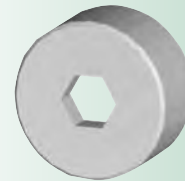
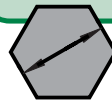
Hexagon punches are stocked without keyways in the head. Keyways can be furnished on request.



Whistle Notch Locators

Hexagon dies are stocked without locators. Locators can be furnished on request.

Hexagon punch and die sizes are measured from flat to flat.



STOCK HEXAGON PUNCHES

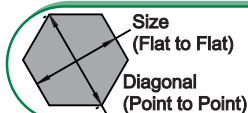
● Represents stock hexagon sizes

Size	FIGURE NUMBER	
	20	26
11/32	●	●
3/8	●	●
13/32	●	●
7/16	●	●
15/32	●	●
1/2	●	●
17/32	●	●
9/16	●	●
19/32	●	●
5/8	●	●
21/32	●	●
11/16	●	●
23/32	●	●
3/4	●	●
25/32	●	●
13/16	●	●
27/32	●	●
7/8	●	●
29/32	●	●
15/16	●	●
31/32	●	●
1	●	●
1-1/32	●	●
1-1/16	●	●
1-3/32	●	●
1-1/8	●	●
1-5/32	●	●
1-3/16	●	●
1-7/32	●	●
1-1/4	●	●

STOCK HEXAGON DIES

● Represents stock hexagon sizes

Size	FIGURE NUMBER	
	59	62
3/8	●	●
13/32	●	●
7/16	●	●
15/32	●	●
1/2	●	●
17/32	●	●
9/16	●	●
19/32	●	●
5/8	●	●
21/32	●	●
11/16	●	●
23/32	●	●
3/4	●	●
25/32	●	●
13/16	●	●
27/32	●	●
7/8	●	●
29/32	●	●
15/16	●	●
31/32	●	●
1	●	●
1-1/32	●	●
1-1/16	●	●
1-3/32	●	●
1-1/8	●	●
1-5/32	●	●
1-3/16	●	●
1-7/32	●	●
1-1/4	●	●
1-9/32	●	●
1-5/16	●	●



GREEN TEAM TIP:

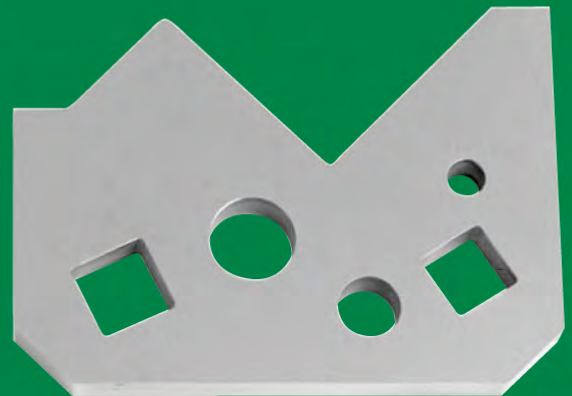
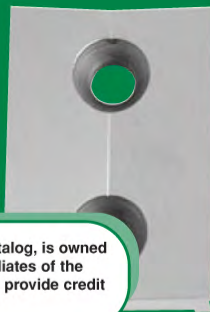
There may be occasions when it is necessary to check the diagonal of your hex size to ensure that the punch will pass through the bore of your coupling nut without interference. The diagonal of a hexagon can be determined by multiplying the size of the hex by 1.1547.

HEXAGON KINGSLAND™ TOOLING

This catalog is the property of The Cleveland Punch & Die Company. All rights reserved. Reproduction of any part of this catalog without the **expressed written consent** of The Cleveland Punch & Die Company is strictly prohibited. **COPYRIGHT©2005**

Kgld MMV

Cleveland Punch & Die Co.



The Kingsland™ trademark referred to in this catalog, is owned by the company itself, its parent company or affiliates of the company and it is our intention to recognize and provide credit to the fullest extent possible.



phone **1-800-451-4342**

fax **1-800-451-6877**

666 Pratt St. • Box 769 • Ravenna, Ohio 44266

www.clevelandpunch.com • E-mail: sales@clevelandpunch.com

Manufactured
in the U.S.A.



© Cleveland Punch & Die Company • 666 Pratt Street, Box 769 • Ravenna, Ohio 44266