

# Cleveland Punch & Die Co.

**PUNCHES • DIES • SHEAR BLADES**  
**for FRANKLIN MANUFACTURING™**  
**MACHINES**



THE  
**CLEVELAND**  
PUNCH & DIE COMPANY

phone **1-800-451-4342**  
fax **1-800-451-6877**

666 Pratt St. • Box 769 • Ravenna, Ohio 44266 • [www.clevelandpunch.com](http://www.clevelandpunch.com)

E-mail: [sales@clevelandpunch.com](mailto:sales@clevelandpunch.com)

# CLEVELAND PUNCH & DIE COMPANY

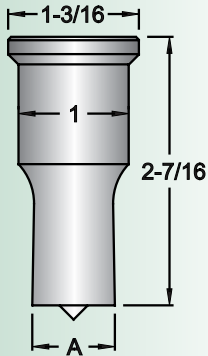
## Dimensions & Specifications

The following pages illustrate our most commonly used punches, dies and related tooling for Franklin Mfg.™ Machines. Refer to our **Cross Reference Catalog** for the proper tooling to fit your machine.

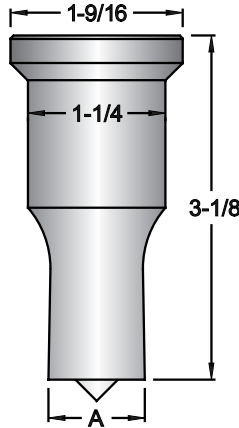
**STOCK PUNCHES & DIES ARE SHIPPED THE SAME DAY ORDERED!**

*\*MADE TO ORDER SIZES CAN BE SHIPPED IN AS LITTLE AS 24 HOURS!*

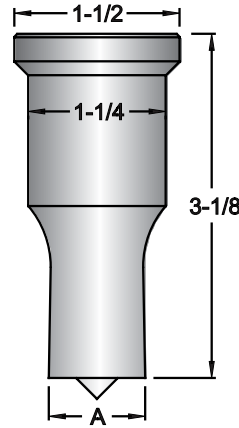
**C-740**  
**IN STOCK**



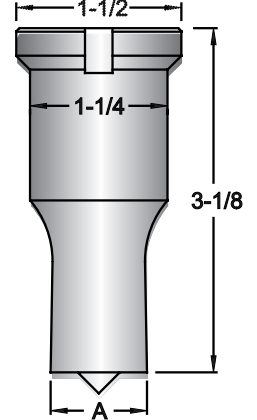
**C-770**  
**(C-272)**  
**IN STOCK**



**C-770F\***  
**(C-272F\*)**

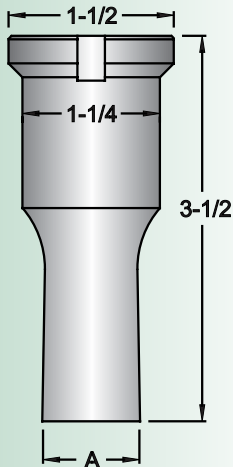


**C-790F\***

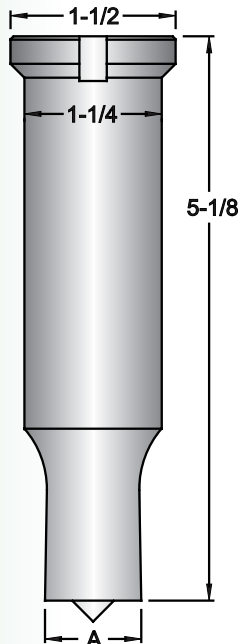


Stock C-272 punches are provided with keyways in the head.

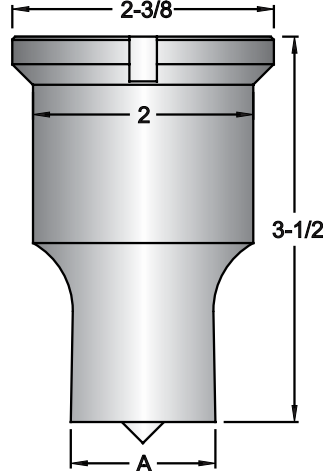
**C-FP1\***



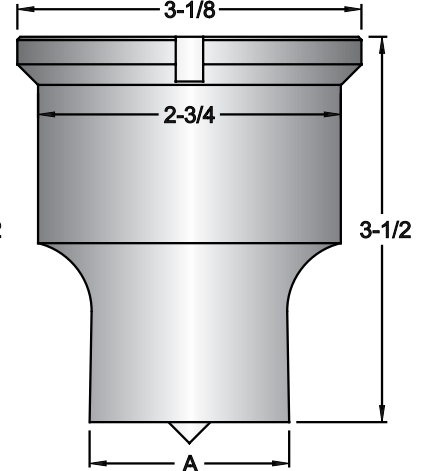
**C-790FXL\***



**C-7501**  
**IN STOCK**



**C-5250P\***



### C-7501 STANDARD SHAPE CONFIGURATIONS



#### Returns

Returned tooling will not be accepted without prior authorization. No credit issued on used or damaged tooling. Special tooling can not be returned. Returned tooling must be shipped prepaid. Restocking charge is 25% of list price.

#### Shortages

All claims must be made within ten days of invoice date.

#### Terms

F.O.B. Ravenna, Ohio  
Net 30 days

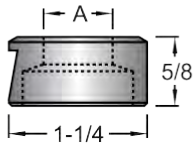
FRANKLIN MFG.™ TOOLING



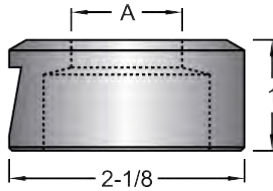
FOR MORE HOLES PER DOLLAR CALL  
**1-800-451-4342**  
 FAX 1-800-451-6877  
 www.clevelandpunch.com

\*MADE TO ORDER SIZES CAN BE SHIPPED IN AS LITTLE AS 24 HOURS!

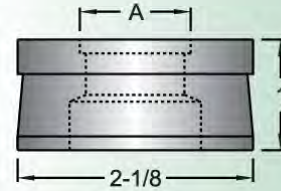
**C-720**  
**IN STOCK**



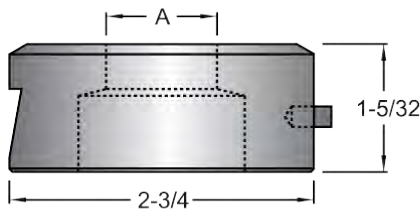
**C-740**  
**IN STOCK**



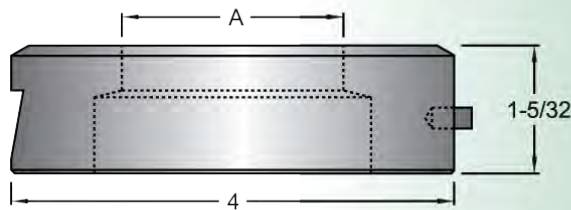
**C-FD1\***



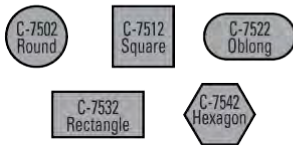
**C-7502**  
**IN STOCK**



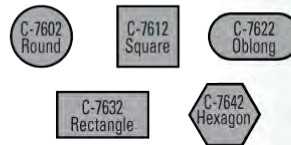
**C-7602\***  
**(C-5250D)**



**C-7502 STANDARD  
 SHAPE CONFIGURATIONS**



**C-7602 STANDARD  
 SHAPE CONFIGURATIONS**



**PLEASE NOTE:**

We stock 1/32" & 1/16" clearance die sizes. Other made to order die sizes such as clearances recommended for gauge stock, can be shipped in as little as 24 hours.

**FOR A-36 AND MILD STEEL PLATE:**

1/4" up to 1/2"	1/32" clearance
1/2" up to 3/4"	1/16" clearance
3/4" up to 1"	3/32" clearance
1" and over	1/8" clearance

**Changes**

All reference to sizes, dimensions, drawings, specifications, whether on drawings, written or otherwise are subject to change without notice.

**GREEN TEAM TIP:**

Good results are obtained by using the adjacent chart to determine die clearance.

**OSHA WARNING**

It is the user's responsibility that the machine and tooling be set up and used in accordance with local and national OSHA Laws and ANSI B11.5 standards for safety.

Do not permit unqualified personnel to setup or operate the machine. Extreme care should be used at all times.

**FRANKLIN MFG.™ TOOLING**

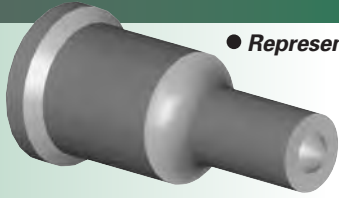
# CLEVELAND PUNCH & DIE COMPANY

The following tables list our stock round punches and dies for Franklin Manufacturing™ Hydraulic Anglelines, Beamlines and portable presses. Refer to our **Cross Reference Catalog** for the proper tooling to fit your machine.

**STOCK PUNCHES & DIES ARE SHIPPED THE SAME DAY ORDERED!**

**MADE TO ORDER SIZES CAN BE SHIPPED IN AS LITTLE AS 24 HOURS!**

**ROUND FRANKLIN MFG.™ TOOLING**



● Represents stock round sizes

STOCK  
ROUND  
PUNCHES

FIGURE NUMBER

Size	C-740	C-770	C-7501
1/8	●	●	
5/32	●	●	
3/16	●	●	
7/32	●	●	
1/4	●	●	
9/32	●	●	
5/16	●	●	
11/32	●	●	
3/8	●	●	
13/32	●	●	
7/16	●	●	
15/32	●	●	
1/2	●	●	
17/32	●	●	
9/16	●	●	●
19/32	●	●	
5/8	●	●	●
21/32	●	●	
11/16	●	●	●
23/32	●	●	
3/4	●	●	●
25/32	●	●	
13/16	●	●	●
27/32	●	●	
7/8	●	●	●
29/32	●	●	
15/16	●	●	●
31/32	●	●	
1	●	●	●
1-1/32	●	●	
1-1/16	●	●	●
1-3/32	●	●	
1-1/8	●	●	●
1-5/32	●	●	
1-3/16	●	●	●
1-7/32	●	●	
1-1/4	●	●	●
1-9/32	●	●	
1-5/16	●	●	●
1-11/32	●	●	
1-3/8	●	●	●
1-13/32	●	●	
1-7/16	●	●	●
1-15/32	●	●	
1-1/2	●	●	●

● Represents stock round sizes

STOCK  
ROUND  
DIES



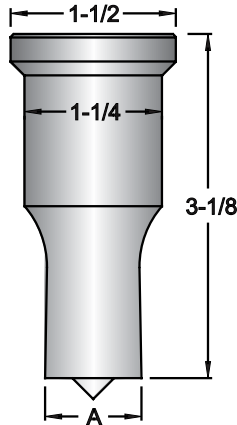
FIGURE NUMBER

Size	C-720	C-740	C-7502
5/32	●	●	
3/16	●	●	
7/32	●	●	
1/4	●	●	
9/32	●	●	
5/16	●	●	
11/32	●	●	●
3/8	●	●	
13/32	●	●	●
7/16	●	●	
15/32	●	●	●
1/2	●	●	
17/32	●	●	●
9/16	●	●	
19/32	●	●	●
5/8	●	●	●
21/32	●	●	●
11/16	●	●	●
23/32	●	●	●
3/4	●	●	●
25/32	●	●	●
13/16	●	●	●
27/32	●	●	●
7/8	●	●	●
29/32	●	●	●
15/16	●	●	●
31/32	●	●	●
1	●	●	●
1-1/32	●	●	●
1-1/16	●	●	●
1-3/32	●	●	●
1-1/8	●	●	●
1-5/32	●	●	●
1-3/16	●	●	●
1-7/32	●	●	●
1-1/4	●	●	●
1-9/32	●	●	●
1-5/16	●	●	●
1-11/32	●	●	●
1-3/8	●	●	●
1-13/32	●	●	●
1-7/16	●	●	●
1-15/32	●	●	●
1-1/2	●	●	●
1-17/32	●	●	●
1-9/16	●	●	●

**NOTE: Newer models of Franklin Manufacturing™ punching machines require a C-770F punch. They are similar to a C-770 except with a 1-1/2" head.**

**C-770F PUNCHES ARE MADE TO ORDER AND CAN BE SHIPPED IN AS LITTLE AS 24 HOURS.**

**C-770F\*  
(C-272F\*)**



**GREEN TEAM TIP:**

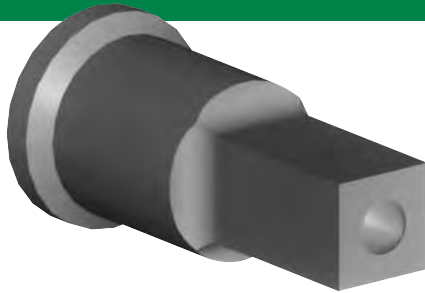
Punches last longer when used with a punch lubricant. For maximum punch life, use Cleveland Punch & Die's patented punch lubricant - **Punch Easy.**

The following tables list our stock square punches, square dies and round bevel serrated dies-Style 218 for Franklin Manufacturing™ Hydraulic Anglelines, Beamlines and portable presses. Made to order sizes can be shipped in as little as 24 hours. Refer to our **Cross Reference Catalog** for the proper tooling to fit your machine.

**FOR MORE HOLES PER DOLLAR CALL**  
**1-800-451-4342**  
**FAX 1-800-451-6877**  
**www.clevelandpunch.com**

**STOCK PUNCHES & DIES ARE SHIPPED THE SAME DAY ORDERED!**

**MADE TO ORDER SIZES CAN BE SHIPPED IN AS LITTLE AS 24 HOURS!**



**STOCK SQUARE PUNCHES**

■ Represents stock square sizes

Size	FIGURE NUMBER	
	C-740	C-272
5/16	■	■
3/8	■	■
13/32	■	■
7/16	■	■
15/32	■	■
1/2	■	■
17/32	■	■
9/16	■	■
19/32	■	■
5/8	■	■
21/32		■
11/16		■
3/4		■
25/32		■
13/16		■

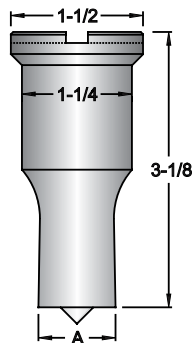
**Keyways in Head of Punch**

Stock C-272 square punches are provided with a keyway in the head. All others listed are stocked without keyways. They can be furnished on request.

**NOTE: Newer models of Franklin Manufacturing™ punching machines require a C-272F punch. They are similar to a C-272 except with a 1-1/2" head.**

**C-272F PUNCHES ARE MADE TO ORDER AND CAN BE SHIPPED IN AS LITTLE AS 24 HOURS.**

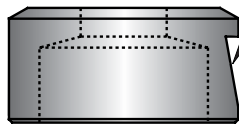
**C-272F\***



**STOCK SQUARE DIES**

■ Represents stock square sizes

Size	FIGURE NUMBER	
	C-740	
11/32	■	
13/32	■	
7/16	■	
15/32	■	
1/2	■	
17/32	■	
9/16	■	
19/32	■	
5/8	■	
21/32	■	
11/16	■	
23/32	■	
3/4	■	
25/32	■	
13/16	■	
27/32	■	
7/8	■	

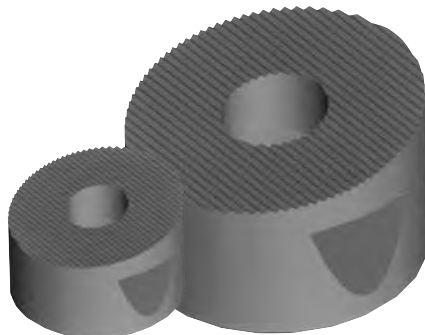


**Whistle Notch Locator**

C-740 square and round bevel serrated dies-Style 218 are stocked with one locator notch.

**STOCK ROUND BEVEL SERRATED DIES - STYLE 218**

● Represents stock round sizes



Size	FIGURE NUMBER	
	C-720	C-740
11/32	●	●
13/32	●	●
7/16	●	●
15/32	●	●
1/2	●	●
9/16	●	●
19/32	●	●
5/8	●	●
21/32	●	●
11/16	●	●
23/32	●	●
3/4	●	●

Size	FIGURE NUMBER	
	C-720	C-740
25/32	●	●
13/16	●	●
27/32	●	●
7/8		●
29/32		●
15/16		●
31/32		●
1		●
1-1/32		●
1-1/16		●
1-3/32		●
1-1/8		●

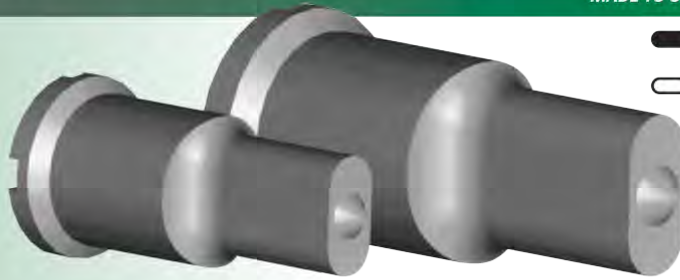
**FRANKLIN MFG.™ TOOLING**

# CLEVELAND PUNCH & DIE COMPANY

The following tables list our stock oblong punches and dies for Franklin Manufacturing™ Hydraulic Anglelines, Beamlines and portable presses. Refer to our **Cross Reference Catalog** for the proper tooling to fit your machine.

**STOCK PUNCHES & DIES ARE SHIPPED THE SAME DAY ORDERED!**

**MADE TO ORDER SIZES CAN BE SHIPPED IN AS LITTLE AS 24 HOURS!**



● Represents stock oblong sizes

○ Represents stock oblong sizes available in 24 hours for Franklin Manufacturing™ machines

## Keyways in Head of Punch

Stock C-272 oblong punches are provided with a cross keyway in the head. All others listed are stocked without keyways. They can be furnished on request.

## STOCK OBLONG PUNCHES

### FIGURE NUMBER

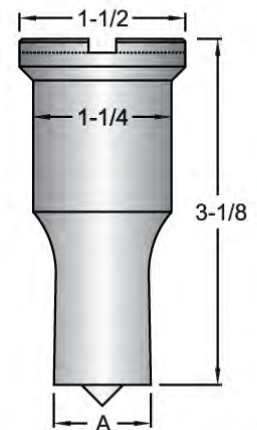
Size	C-740	C-272 (C-770)	Size	C-740	C-272 (C-770)
1/4 x 1	●	●	11/16 x 1-1/4	●	●
5/16 x 1	●	●	11/16 x 1-1/2	●	○
3/8 x 3/4	●	○	3/4 x 1	●	●
3/8 x 1	●	○	3/4 x 1-1/4	●	●
3/8 x 1-1/4	●	●	3/4 x 1-1/2	●	○
7/16 x 3/4	●	○	13/16 x 1	●	●
7/16 x 1	●	●	13/16 x 1-1/16	●	●
7/16 x 1-1/4	●	●	13/16 x 1-1/8	●	●
7/16 x 1-1/2	●	○	13/16 x 1-1/4	●	●
1/2 x 1	●	●	13/16 x 1-1/2	●	○
1/2 x 1-1/4	●	○	7/8 x 1	●	○
9/16 x 3/4	●	○	7/8 x 1-1/16	●	●
9/16 x 1	●	●	7/8 x 1-1/8	●	●
9/16 x 1-1/16	●	●	7/8 x 1-1/4	●	●
9/16 x 1-1/8	●	○	7/8 x 1-1/2	●	○
9/16 x 1-1/4	●	●	15/16 x 1-1/16	●	○
9/16 x 1-1/2	●	○	15/16 x 1-1/8	●	●
5/8 x 1	●	●	15/16 x 1-1/4	●	●
5/8 x 1-1/4	●	●	15/16 x 1-1/2	●	○
11/16 x 1	●	●	1-1/16 x 1-1/4	●	●
11/16 x 1-1/16	●	●	1-1/16 x 1-5/16	●	○
11/16 x 1-1/8	●	○	1-1/16 x 1-1/2	●	○

**NOTE:** Newer models of Franklin Manufacturing™ punching machines require a C-272F punch. They are similar to a C-272 except with a 1-1/2" head.

**C-272F PUNCHES ARE MADE TO ORDER AND CAN BE SHIPPED IN AS LITTLE AS 24 HOURS.**

**C-740  
IN STOCK**

**C-272F\***



### GREEN TEAM TIP:

Punches last longer when used with a punch lubricant. For maximum punch life, use Cleveland Punch & Die's patented punch lubricant - **Punch Easy**.

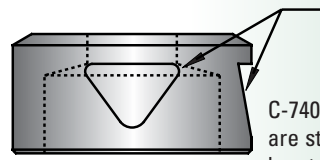
**OBLONG FRANKLIN MFG.™ PUNCHES**

This catalog is the property of The Cleveland Punch & Die Company. All rights reserved. Reproduction of any part of this catalog without the **expressed written consent** of The Cleveland Punch & Die Company is strictly prohibited.  
**COPYRIGHT©2006 Cleveland Punch & Die Co.**  
 666 Pratt Street, Box 769 • Ravenna, Ohio 44266  
 1-800-451-4342 • Fax 1-800-451-6877  
 All Rights Reserved.

**FOR MORE HOLES PER DOLLAR CALL**  
**1-800-451-4342**  
**FAX 1-800-451-6877**  
[www.clevelandpunch.com](http://www.clevelandpunch.com)

MADE TO ORDER SIZES CAN BE SHIPPED IN AS LITTLE AS 24 HOURS!

STOCK OBLONG DIES



**Whistle Notch Locators**

C-740 oblong dies are stocked with two locator notches indexed at 90 degrees.

Size	C-740	Size	C-740	Size	C-740
9/32 x 1-1/32	●	21/32 x 1-9/32	●		
11/32 x 1-1/32	●	11/16 x 1-1/16	●		
13/32 x 25/32	●	11/16 x 1-5/16	●	7/8 x 1-3/16	●
13/32 x 1-1/32	●	23/32 x 1-1/32	●	7/8 x 1-5/16	●
13/32 x 1-9/32	●	23/32 x 1-3/32	●	7/8 x 1-9/16	●
15/32 x 25/32	●	23/32 x 1-5/32	●	29/32 x 1-1/32	●
15/32 x 1-1/32	●	23/32 x 1-9/32	●	29/32 x 1-3/32	●
15/32 x 1-9/32	●	23/32 x 1-17/32	●	29/32 x 1-5/32	●
15/32 x 1-17/32	●	3/4 x 1-1/16	●	29/32 x 1-9/32	●
17/32 x 1-1/32	●	3/4 x 1-1/8	●	29/32 x 1-17/32	●
17/32 x 1-9/32	●	3/4 x 1-3/16	●	15/16 x 1-1/16	●
9/16 x 1-1/16	●	3/4 x 1-5/16	●	15/16 x 1-1/8	●
9/16 x 1-5/16	●	3/4 x 1-9/16	●	15/16 x 1-3/16	●
19/32 x 25/32	●	25/32 x 1-1/32	●	15/16 x 1-5/16	●
19/32 x 1-1/32	●	25/32 x 1-9/32	●	15/16 x 1-9/16	●
19/32 x 1-3/32	●	25/32 x 1-17/32	●	31/32 x 1-3/32	●
19/32 x 1-5/32	●	13/16 x 1-1/16	●	31/32 x 1-5/32	●
19/32 x 1-9/32	●	13/16 x 1-5/16	●	31/32 x 1-9/32	●
19/32 x 1-17/32	●	13/16 x 1-9/16	●	31/32 x 1-17/32	●
5/8 x 13/16	●	27/32 x 1-1/32	●	1 x 1-1/8	●
5/8 x 1-1/16	●	27/32 x 1-3/32	●	1 x 1-3/16	●
5/8 x 1-1/8	●	27/32 x 1-5/32	●	1 x 1-5/16	●
5/8 x 1-3/16	●	27/32 x 1-9/32	●	1 x 1-9/16	●
5/8 x 1-5/16	●	27/32 x 1-17/32	●	1-1/8 x 1-5/16	●
5/8 x 1-9/16	●	7/8 x 1-1/16	●	1-1/8 x 1-3/8	●
21/32 x 1-1/32	●	7/8 x 1-1/8	●	1-1/8 x 1-9/16	●

**OBLONG FRANKLIN MFG.™ DIES**



# **Punch-Easy®**

**Patented  
Punch and Die Lubricant**

**Punch-Easy®** is a non-pigmented honey colored heavy duty odorless punching and shearing oil for thick materials. It is used on ferrous or non ferrous steels where scoring, galling and friction is a problem. It is a particularly good punch and shear oil for thick high carbon steel, armor plate, grader blade, farm implement tools and stainless steels. Punch-Easy® is unparalleled for high production and multiple stage punching or stamping operations. Actual pyrometer readings indicate an operating heat reduction in drawn parts, punches and dies of 40%. It is to be used for cold application and not made for hot application. Punch-Easy® may be used as received or diluted with Easy-Thin 100® for less severe jobs. **Punch-Easy® is now available in quarts, gallons, 5-gallon reusable pails, case lots and 55-gallon drums. Use Punch-Easy today!**

*"Punch Easy" doubles my tooling life when punching thicker material.*

-T.V.  
Pennsylvania



- P**unches, dies, shears receive less scoring and galling.
- U**timize more press time by decreased tool changes.
- N**ew tool life making better holes for a longer time.
- C**leans easy with any standard cleaner if required.
- H**olds lubrication to tools for rust prevention when not in use.
- E**ase of application with brush or swab.
- A**pproved and tested for the toughest punching and shear jobs.
- S**mooth increased production with more parts per tool.
- Y**our best bet is to use **Punch-Easy**.

*"Punch Easy" eliminated my customer's galling problem immediately.*

-M.M.  
Dealer, New York

*"Punch Easy" solved the problem of the end of our punches pulling off.*

-R.W.  
Dealer, Oklahoma

**1-800-451-4342 phone**  
**1-800-451-6877 fax**

666 Pratt St. • Box 769 • Ravenna, Ohio 44266

[www.clevelandpunch.com](http://www.clevelandpunch.com) • E-mail: [sales@clevelandpunch.com](mailto:sales@clevelandpunch.com)